

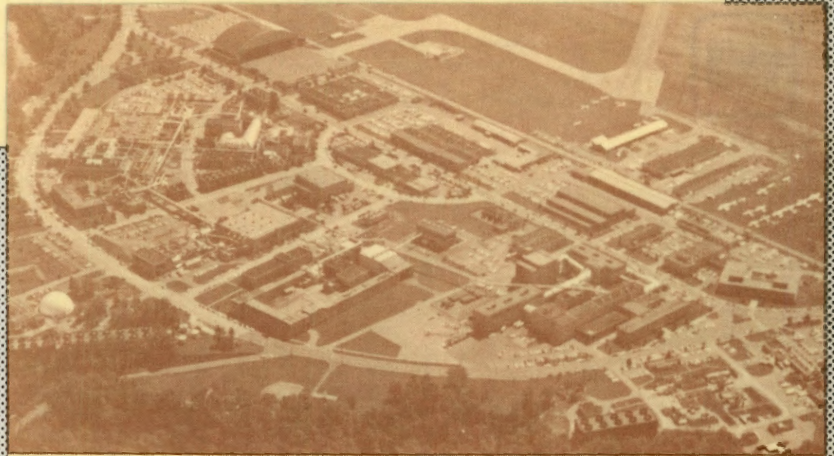
1973 INSPECTION MAILINGS

1. "ALERT" FLYER (POSTCARD) - JUNE 11, 1973  
Card: "save the dates of September 19-21, 1973".
2. FIRST MAILING - JULY 15, 1973
  - a. Invitation
  - b. Card registration forms
  - c. Addressed, franked return envelope
3. SECOND MAILING - As Received
  - a. Confirmation
    - (1) "Looking forward to seeing you" letter.
    - (2) Miscellaneous material (i.e., transient aircraft instructions, auto parking information).
  - b. Second Invitation (Follow-up) - AUGUST 22, 1973
    - (1) "Would like to have you visit us -"please repond" letter
    - (2) Reservation Form
    - (3) Addressed, franked return envelope.
4. PUBLICITY INSPECTION BROCHURE - OCTOBER 1973

NATIONAL AERONAUTICS AND SPACE ADMINISTRATION  
LEWIS RESEARCH CENTER  
CLEVELAND, OHIO 44135

OFFICIAL BUSINESS  
PENALTY FOR PRIVATE USE \$300

POSTAGE AND FEES PAID  
NATIONAL AERONAUTICS AND  
SPACE ADMINISTRATION  
NASA-451



NATIONAL AERONAUTICS AND SPACE ADMINISTRATION  
LEWIS RESEARCH CENTER  
CLEVELAND, OHIO

I am pleased to announce that on September 19 through September 21, 1973, the Lewis Research Center will present for leaders of government, business, industry, labor, and the professions a review of its activities under the theme "Technology in the Service of Man."

In several weeks I will be sending you a formal invitation with more information. Until then, I hope you will save one of these days for us.

*Bruce T. Lundin*

Bruce T. Lundin  
Director



NATIONAL AERONAUTICS AND SPACE ADMINISTRATION  
LEWIS RESEARCH CENTER  
CLEVELAND, OHIO 44135

REPLY TO  
ATTN OF: INSP

July 12, 1973

I cordially invite you to attend a program at the Lewis Research Center of the National Aeronautics and Space Administration entitled "Technology in the Service of Man," to be repeated daily from Wednesday, September 19 through Friday, September 21.

The program is intended to give leaders from government, business, industry, labor, and the professions a broad review of our current activities and their purposes. It is, in a sense, a report on our stewardship of the resources of the Lewis Center. It is also an opportunity to see the unusual facilities in use here - wind tunnels, altitude test chambers, space simulation systems, etc.

Topics to be discussed with exhibits and demonstrations will include quieter engines; cleaner skies; new modes of air transportation; rocket-related technologies; services from satellites; and recent advances pertinent to energy and power, lubrication and wear, materials, and communications.

Your reservation reply card is enclosed. If the day we have suggested for you is inconvenient, please change it.

We will provide shuttle transportation between several nearby hotels and motels and the Center. A list of convenient hotels and motels is included on the reservation form.

I am looking forward to having you with us.

Sincerely,

A handwritten signature in blue ink that reads "Bruce T. Lundin".

Bruce T. Lundin  
Director

Enclosure

TECHNOLOGY IN THE SERVICE OF MAN  
NASA Lewis Research Center - Cleveland, Ohio  
September 19, 20, 21, 1973

A. From:

*If incorrect, please make the necessary changes for us.*

B. I will accept your invitation and plan to attend:

(1st Choice) (2nd Choice)

- |                                   |                          |                          |
|-----------------------------------|--------------------------|--------------------------|
| Wed. Sept. 19, 1973               | <input type="checkbox"/> | <input type="checkbox"/> |
| Business/Industry/Labor           |                          |                          |
| Thurs. Sept. 20, 1973             | <input type="checkbox"/> | <input type="checkbox"/> |
| Govt/Civic/Technical Org.         |                          |                          |
| Fri. Sept. 21, 1973               | <input type="checkbox"/> | <input type="checkbox"/> |
| Legislators/Education/Professions |                          |                          |

I will be unable to attend but I plan to send my representative:

NAME OF PERSON WHO WILL ATTEND  
(If different than addressee "A" above)

\_\_\_\_\_  
(Name)

\_\_\_\_\_  
(Title)

D.  Sorry, we will be unable to attend.

E. I plan to arrive and depart Cleveland via:

- Commercial Airline  
 Govt or Private Airplane (Transient instructions will be forwarded)  
(Over)

F.  I plan to drive to Lewis and park there.

G. I would appreciate local transportation to and from Lewis Research Center. I am staying at one of the following motels near you:

- Holiday Inn (Brookpark Rd.) 267-1700  
 Marriott Inn (4277 West 150th St.) 252-5333  
 Port 'O' Call Western Motel (Brookpark Rd.) 267-5100  
 Ramada Inn (Brookpark Rd.) 267-5700  
 Sheraton Hopkins (Airport) 267-1500  
 Sheraton Inn (Brookpark Rd.) 267-9800  
 Other (Specify) \_\_\_\_\_

NOTE: Return this reservation form promptly. Confirmation will be sent to you.

H. Remarks/Comments

NASA USE ONLY

Code \_\_\_\_\_ Date received \_\_\_\_\_

Date sched. \_\_\_\_\_ Conf. sent \_\_\_\_\_

Group assign. \_\_\_\_\_

AREA CODE: 216



NATIONAL AERONAUTICS AND SPACE ADMINISTRATION

REPLY TO  
ATTN OF: INSP

*In order to assist us with our  
planning may we please have  
your reply by September 7, 1973.*

This letter is a follow-up to my earlier invitation to visit NASA's Lewis Research Center and to view the program, "Technology in the Service of Man", which will be repeated daily from 8:30 a.m. to 5:15 p.m. EDT on Wednesday, September 19 through Friday, September 21.

The program is intended to give leaders from government, business, industry, labor, and the professions a broad review of our current activities and their purposes. It is, in a sense, a report on our stewardship of the resources of the Lewis Center. It is also an opportunity to see the unusual facilities in use here - wind tunnels, altitude test chambers, space simulation systems, etc.

Topics to be discussed with exhibits and demonstrations will include: quieter engines; cleaner skies; new modes of air transportation; rocket-related technologies; services from satellites; and recent advances pertinent to energy and power, lubrication and wear, materials, and communications.

A reservation reply card is enclosed. Please select your preferred date.

Shuttle transportation will be provided between the Center and the hotels and motels listed on the reservation form.

I hope you will be able to visit us.

Sincerely,

Bruce T. Lundin  
Director

Enclosure



NATIONAL AERONAUTICS AND SPACE ADMINISTRATION  
LEWIS RESEARCH CENTER  
CLEVELAND, OHIO 44135

REPLY TO  
ATTN OF:

1003

We have received your registration card for our program, "Technology in the Service of Man". We are looking forward to your visit and will expect you on

Enclosed is information on the program schedule, parking, bus service, emergency telephone numbers, etc. If you need any additional information, please write, or telephone (216) 433-4000 extension 6873.

We appreciate your interest in visiting the Lewis Research Center, and we look forward to having you with us.

Sincerely,

Bruce T. Lundin  
Director

Enclosures



NATIONAL AERONAUTICS AND SPACE ADMINISTRATION  
LEWIS RESEARCH CENTER  
CLEVELAND, OHIO 44135

REPLY TO  
ATTN OF: 1003

We have received your registration card for our program, "Technology in the Service of Man." We are looking forward to your visit and will expect you on

We will be glad to have your associate attend also and we have sent him a separate letter confirming his attendance.

Enclosed is information on the program schedule, parking, bus service, emergency telephone numbers, etc. If you need any additional information, please write, or telephone (216) 433-4000, extension 6873.

We appreciate your interest in visiting the Lewis Research Center, and we look forward to having you with us.

Sincerely,

Bruce T. Lundin  
Director

Enclosures



NATIONAL AERONAUTICS AND SPACE ADMINISTRATION  
LEWIS RESEARCH CENTER  
CLEVELAND, OHIO 44135

REPLY TO  
ATTN OF: 1003

This is to confirm your attendance for our program, "Technology in the Service of Man," on

Enclosed is information on the program schedule, parking, bus service, emergency telephone numbers, etc. If you need any additional information, please write, or telephone (216) 433-4000, extension 6873.

We appreciate your interest in visiting the Lewis Research Center, and we are glad that you will accompany

Sincerely,

Bruce T. Lundin  
Director

Enclosures





NATIONAL AERONAUTICS AND SPACE ADMINISTRATION  
LEWIS RESEARCH CENTER  
CLEVELAND, OHIO 44135

REPLY TO 1003  
ATTN OF:

We have just received your registration card informing us that you would like to attend our program, "Technology in the Service of Man", on

Unfortunately, reservations have reached an attendance limit on the day you indicated as your primary choice. Consequently, we are confirming your visit with us for the date of your alternate choice,

Enclosed is additional information on the program schedule, parking, bus service, emergency telephone numbers, etc. If you need any further information, please write, or telephone (216) 433-4000 extension 6873.

We appreciate your interest in visiting the Lewis Research Center, and we look forward to having you with us.

Sincerely,

Bruce T. Lundin  
Director

Enclosures



NATIONAL AERONAUTICS AND SPACE ADMINISTRATION  
LEWIS RESEARCH CENTER  
CLEVELAND, OHIO 44135

REPLY TO  
ATTN OF:

INSP

September 11, 1973

We have just received your registration card informing us that you would like to attend our program, "Technology in the Service of Man", on Wednesday, September 19 or Thursday, September 20, 1973.

Unfortunately, reservations have reached an attendance limit on those dates. Consequently, we are confirming your visit with us for Friday, September 21, 1973 provided you let us know no later than 5 p.m. Monday, September 17 if this date is acceptable.

Enclosed is information on the program schedule, parking, bus service, emergency telephone numbers, etc. If you need any additional information, please telephone (216) 433-4000, extension 6873.

We appreciate your interest in visiting the Lewis Research Center, and hope that you can be with us on September 21, 1973.

Sincerely,

Bruce T. Lundin  
Director

Enclosure



NATIONAL AERONAUTICS AND SPACE ADMINISTRATION  
LEWIS RESEARCH CENTER  
CLEVELAND, OHIO 44135

REPLY TO  
ATTN OF: 1003

We have just received your registration card informing us that you would like to attend our program, "Technology in the Service of Man", on

Unfortunately, registrations have reached an attendance limit on the date of your preference; can you come on

May we have an early reply, as we will hold a reservation for you. We hope you will be able to be with us.

Sincerely,

Bruce T. Lundin  
Director

NEVER USED

"TECHNOLOGY IN THE SERVICE OF MAN"  
NATIONAL AERONAUTICS AND SPACE ADMINISTRATION  
LEWIS RESEARCH CENTER

September 19, 20, & 21, 1973

GENERAL INFORMATION

Registration

Registration will begin each day at 8:00 a. m. EDT in the Development Engineering Building, located on the north side of Brookpark Road across from the Center's main entrance. The \$5.00 registration fee purchased at the time of registration will cover the costs of coffee breaks, luncheon and the social hour which concludes the program.

Program Hours

The program will begin promptly at 9:00 a. m. EDT in the Auditorium of the Development Engineering Building and will end at approximately 5:15 p. m. in the NASA Hangar.

Lodging and Airport Shuttle Service

A map of the locations of motels near the Lewis Research Center is on the reverse side of this sheet. Guests are asked to make their own motel arrangements.

The following motels provide free shuttle service for their guests to and from Cleveland Hopkins International Airport: Holiday Inn, Port O'Call, Ramada Inn, Sheraton Inn, Travelodge, Parkbrook, (all on Brookpark Road) and the Marriott Inn.

Local Transportation

Free bus service to the Lewis Research Center will be provided at 7:30 and 8:30 a. m. EDT from the following motels: Holiday Inn, Port O'Call, Ramada Inn, Sheraton Hopkins and Sheraton Inn, and at 8:00 a. m. EDT from the Marriott Inn. Transportation from other motels will be provided if there are sufficient registrants. Buses to the Visitors' Parking Area, all motels, and the airport will leave the Center after the social hour (approximately 5:15 EDT).

Visitor Car Parking

The Visitors' Parking Area is at the east end of the Development Engineering Building, located on the north side of Brookpark Road.

Transient Aircraft

Government-owned aircraft may discharge Inspection guests at the NASA-Lewis Hangar ramp. Civil aircraft should contact a fixed base operator such as Sundorph Aeronautical (adjacent to NASA-Lewis) for service, parking or overnight storage; tie-down facilities are not available at NASA-Lewis. Detailed instructions for transient aircraft crews will be sent if you indicate this method of travel.

Messages

Personal messages will be delivered to you promptly throughout the day. The telephone number of the Message Center is (216) 433-4000, extension 6869.

Medical Services

Guests will have emergency access to Lewis's medical facilities. The Center should be notified in advance if any special medical arrangements are required. (216) 433-4000, extension 6873.

Coats and Baggage

Personal baggage and coats may be left safely in a check room near the Message Center. Guests will rarely be more than a few feet from a bus or exhibit building.

Security

Unclassified; no clearance required. Cameras will be permitted.

**LEGEND**

1. NASA - Lewis Research Center  
21000 Brookpark Rd. 433-4 30
2. Cleveland Motel  
22735 Lorain Rd. 734-0500
3. Buckeye House Motor Inn  
22989 Lorain Rd. 734-1100
4. Airport International Inn  
22115 Brookpark Rd. 734-4500
5. Columbia Terrace Motor Inn  
24399 Lorain Rd. 777-4100
6. Sheraton Inn  
Hopkins Airport Motel  
5300 Riverside Dr. 267-1500
7. Valley View Motel  
20495 Lorain Rd. 333-1100
8. Park Motel  
20611 Lorain Rd. 333-1066
9. Manor Motel  
20627 Lorain Rd. 331-6623
10. Hospitality Inn  
17000 Bagley Rd. at I-71  
Middleburg Hts. 243-5200
11. Travelodge  
16789 Brookpark Rd. 267-0100
12. Holiday Inn  
16501 Brookpark Rd. 267-1700
13. Port-O-Call  
16161 Brookpark Rd. 267-5100
14. Sheraton Airport Motel  
15455 Brookpark Rd. 267-9800
15. Howard Johnson Motor Lodge  
14043 Brookpark Rd. 267-2350
16. Marriott Inn  
4277 W. 150 St. 252-5333
17. Parkbrook Motel  
14011 Brookpark Rd. 267-2450
18. Ramanda Inn  
13930 Brookpark Rd. 267-5700
19. Brookpark Motel  
9425 Brookpark Rd. 661-6: 57

