

S2.03-9125 Additive Manufactured Very Light Weight Diamond Turned Aspheric Mirror

Contract No. NNX15CM50P (SBIR 2008-I) (MSFC)

Mirror Technology SBIR/STTR Workshop

November 9 – 12 , 2015

Annapolis, Maryland

John M. Casstevens
Dallas Optical Systems, Inc.
972-564-1156

These SBIR data are furnished with SBIR rights under Contract No. NNX15CM50P. For a period of 4 years, unless extended in accordance with FAR 27.409(h), after acceptance of all items to be delivered under this contract, the Government will use these data for Government purposes only, and they shall not be disclosed outside the Government (including disclosure for procurement purposes) during such period without permission of the Contractor, except that, subject to the foregoing use and disclosure prohibitions, these data may be disclosed for use by support Contractors. After the protection period, the Government has a paid-up license to use, and to authorize others to use on its behalf, these data for Government purposes, but is relieved of all disclosure prohibitions and assumes no liability for unauthorized use of these data by third parties. This notice shall be affixed to any reproductions of these data, in whole or in part.

S2.03-9125 Additive Manufactured Very Light Weight Diamond Turned Aspheric Mirror

Contract No. NNX15CM50P (SBIR 2008-I) (MSFC)

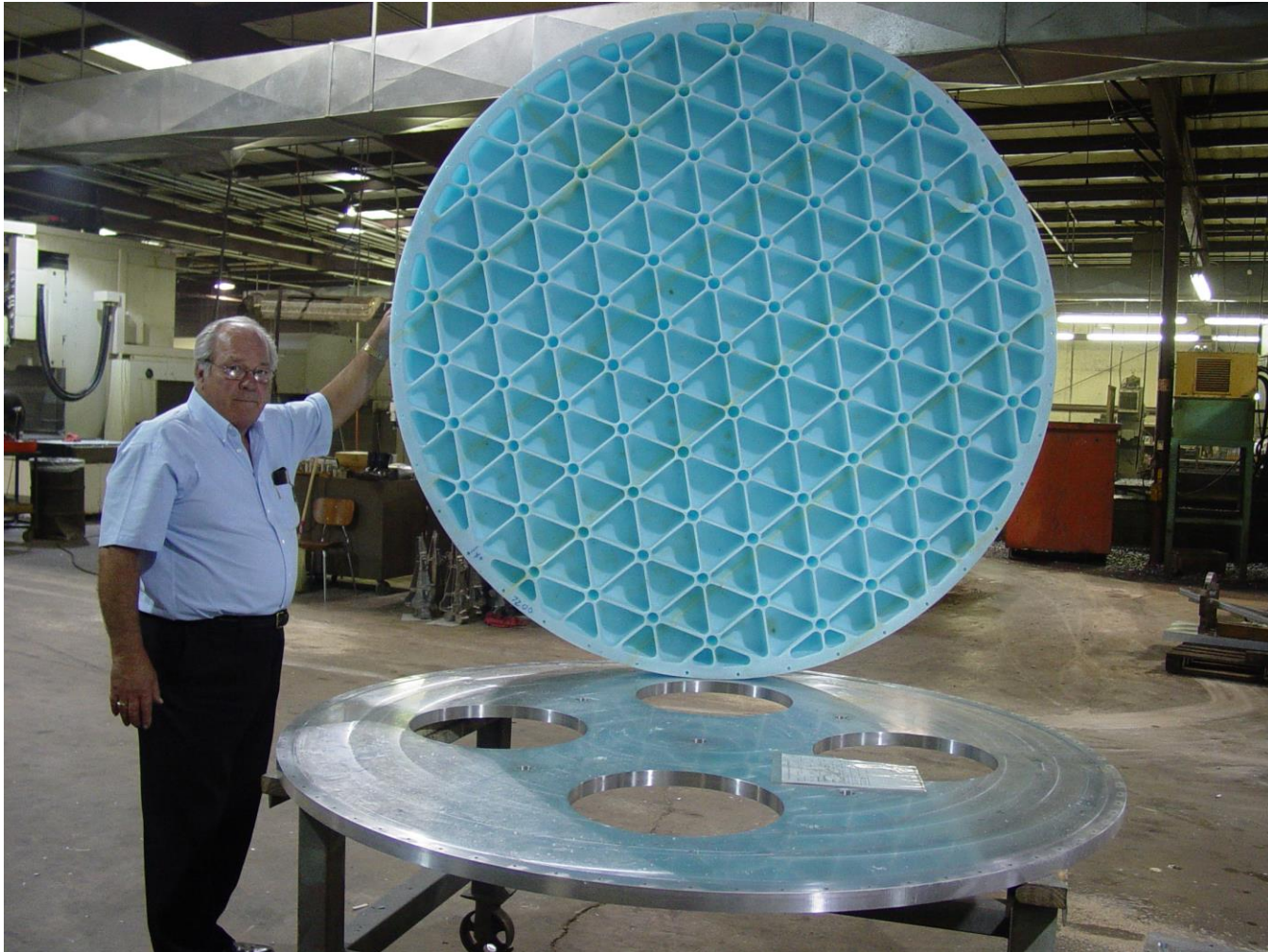
OUTLINE

- **CONCEPT, BACKGROUND AND GOALS**
- **MIRROR MFG. PROCESS**
- **PROGRESS TO DATE**
- **SUMMARY**

Concept and Goals

- Develop and demonstrate a process for producing a very light weight, stiff mirror substrate with Direct Metal Laser Sintering DMLS of Inconel superalloy and other steel powders and also aluminum powders.**
- Demonstration of plating NiP alloy on a DMLS additively manufactured mirror substrate to provide a thermal expansion matched coating suitable for diamond turning as a method of producing a high quality optical surface.**
- Evaluation of mechanical stability and stiffness and the extent of mirror internal structure print through on the finished optical surface as a function of faceplate thickness.**
- Optical and dimensional inspection and characterization of the finished mirror for overall optical figure accuracy and surface smoothness achieved by diamond turning.**

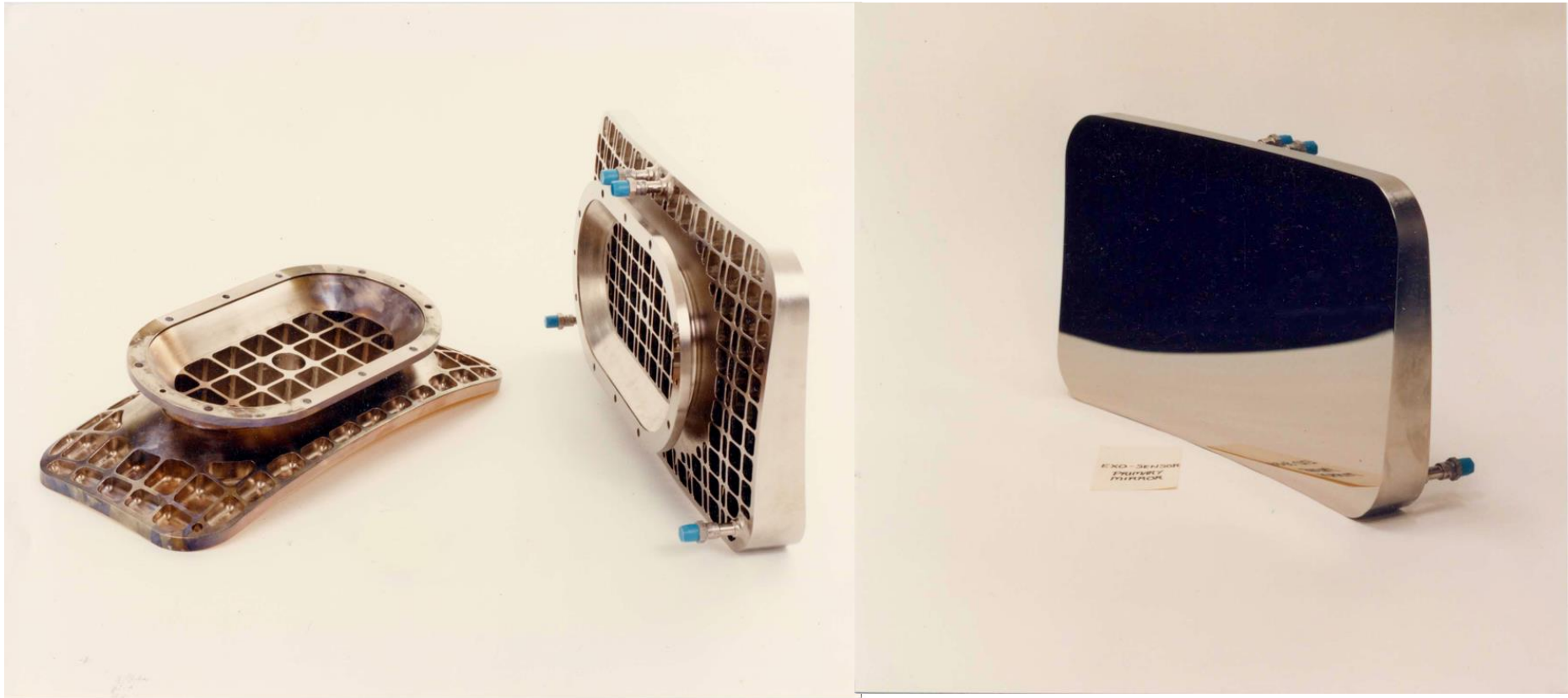
1.8 Meter Diameter Foam Plastic Mirror Substrate



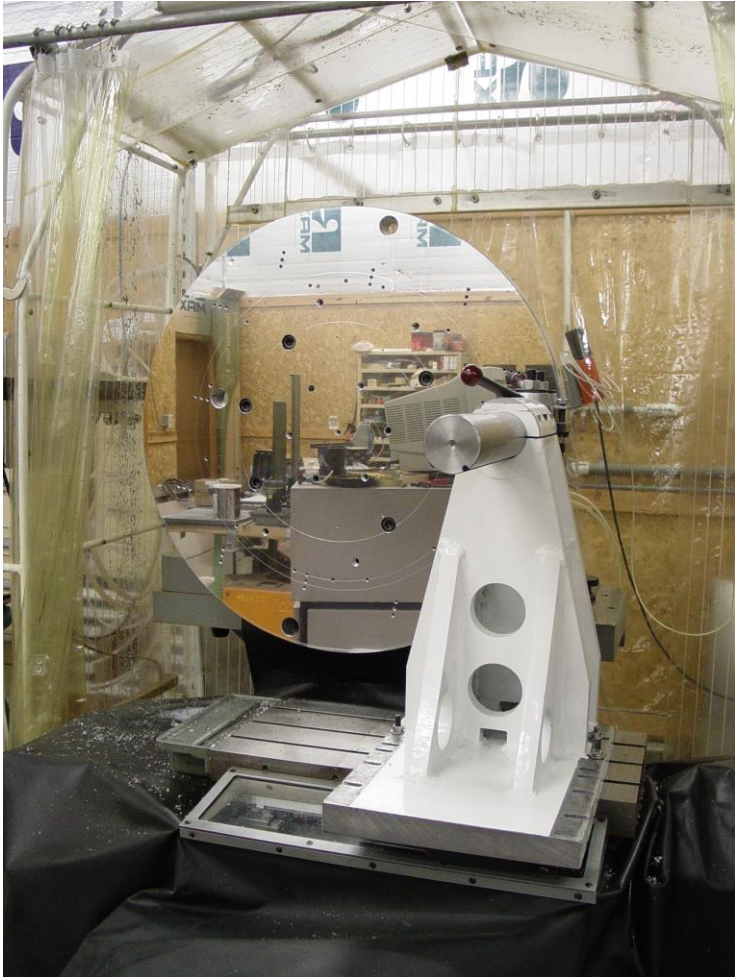
2.48 Meter Aluminum Mirror



Diamond Turned Off-Axis Light Weighted Electroless Nickel Plated Aluminum Mirrors



Large Part Diamond Turning Experience



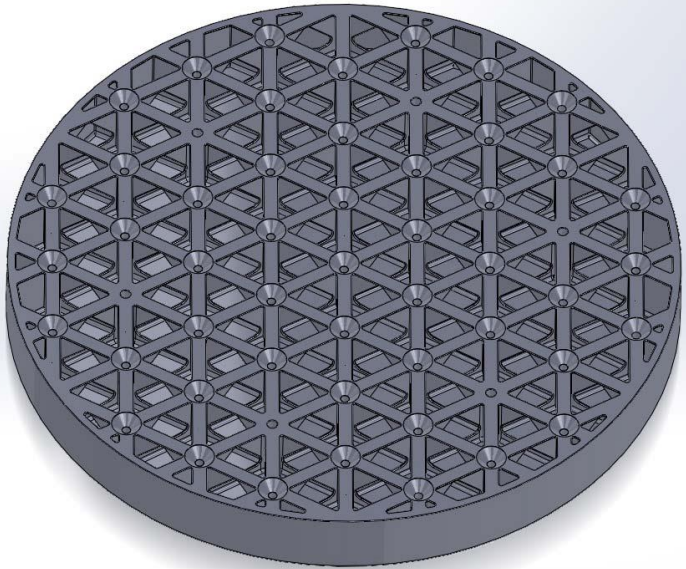
Thermal Expansion of NiP Plating and Steels

Comparison of Nickel Phosphorus Deposition to Other Processes

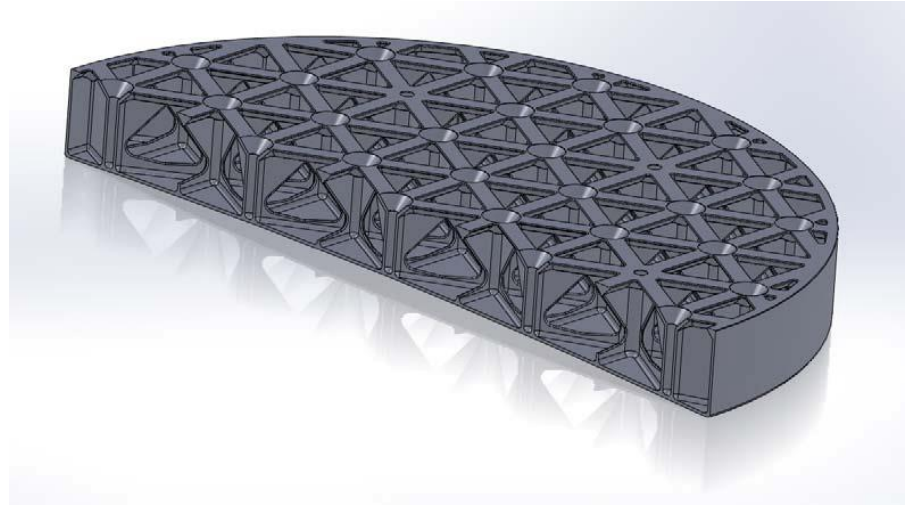
Parameter	Nickel	Electroless Nickel	NiP & NiCoP (Electrolytic)
Plating Temp °C	38 – 50	82 – 90	40 – 50
Control Method	Soluble Anode	Chemical Replenish	Soluble Anode
Yield (0.2%) (MPa)	500	See UTS	See UTS
MicroYield (MPa)	70	500 +	830 +
UTS Max (MPa)	800	850	1800 – 2150
Specific Gravity	8.9	7.8 – 8.0	7.8 – 8.0
Stress Control (Real Time)	Yes	No	Yes
Hardness (Rockwell C)	22 – 24	48 – 52	48 – 52
Diamond Machining	No	Yes	Yes
Thick Deposits	Yes	No	Yes

Material	Thermal Expansion – ppm / C
Inconel 718	12.2
Stainless steel alloy 17-4PH	10.4
Mild Steel AISI 1010	12.2
Ni 11-13 % P	12.5
Stainless steel 304	14.7

Light weight NiP Plated Additive Manufactured 718 Inconel Mirror Design Pat. Pending

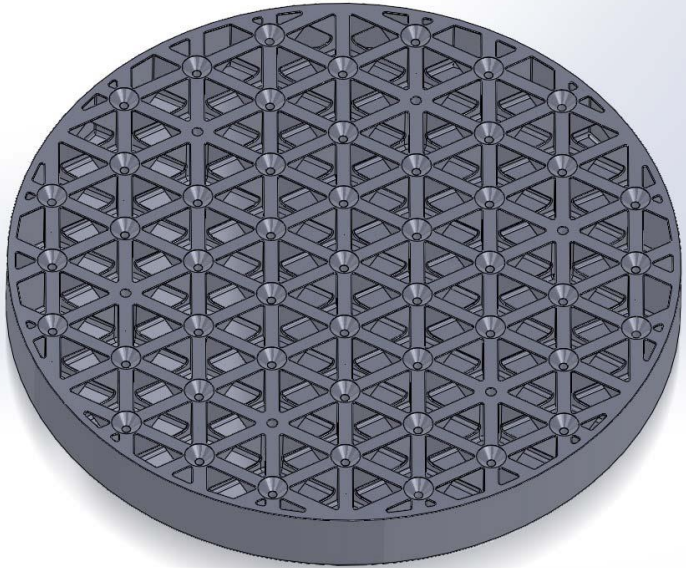


Wall thickness: 0.89mm
Diameter 0.24 meter
Thickness: 25.4 mm
Spherical Mirror - 2.3 meter radius
Weight: 1.4 kg
Areal density: 31 kg/sq meter

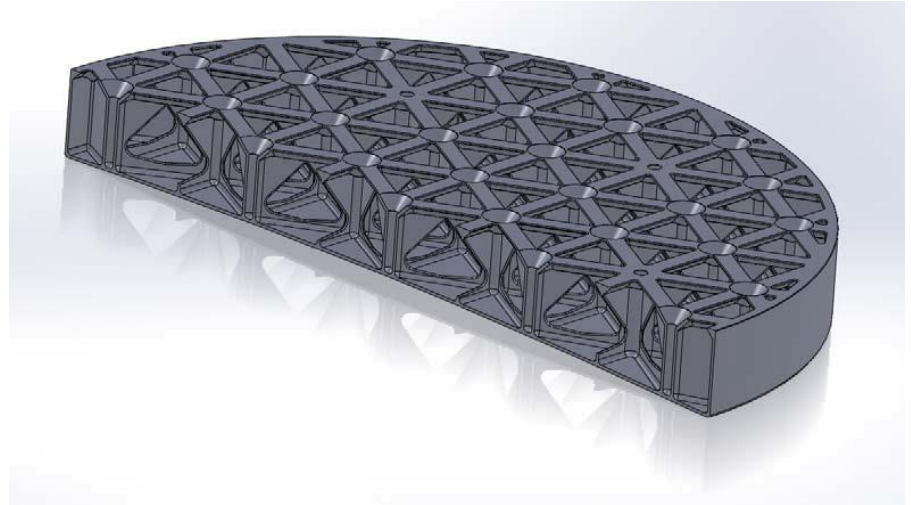


Wall thickness: 0.51mm
Diameter 0.24 meter
Thickness: 25.4 mm
Spherical Mirror - 2.3 meter radius
Weight: 0.8 kg
Areal density: 17.6 kg/sq meter

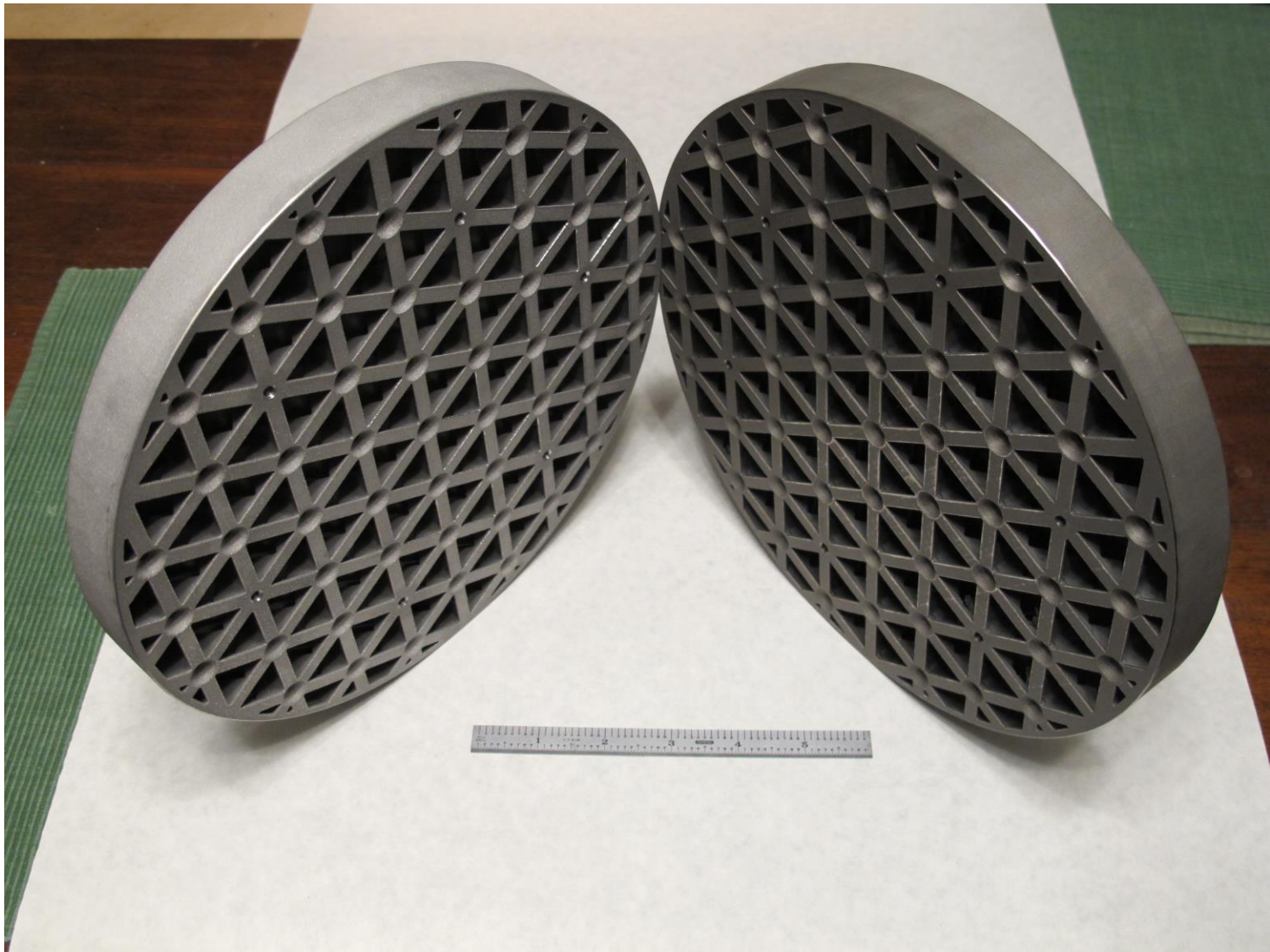
Light weight Additive Manufactured Aluminum Mirror Design Pat. Pending



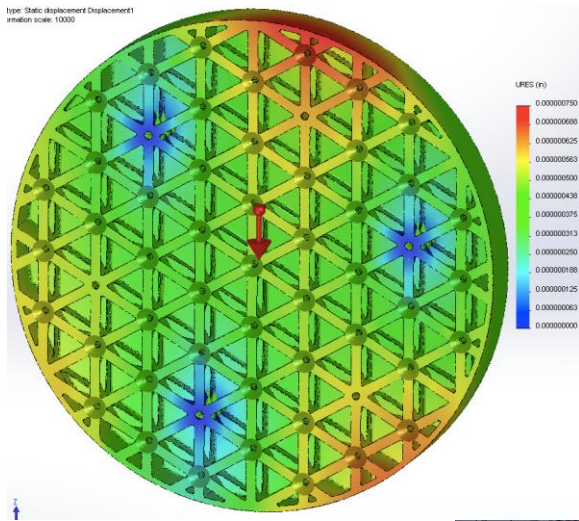
Wall thickness: 0.89mm
Diameter 0.24 meter
Thickness: 25.4 mm
Spherical Mirror - 2.3 meter radius
Weight: 0.483 kg
Areal density: 10.6 kg/sq meter



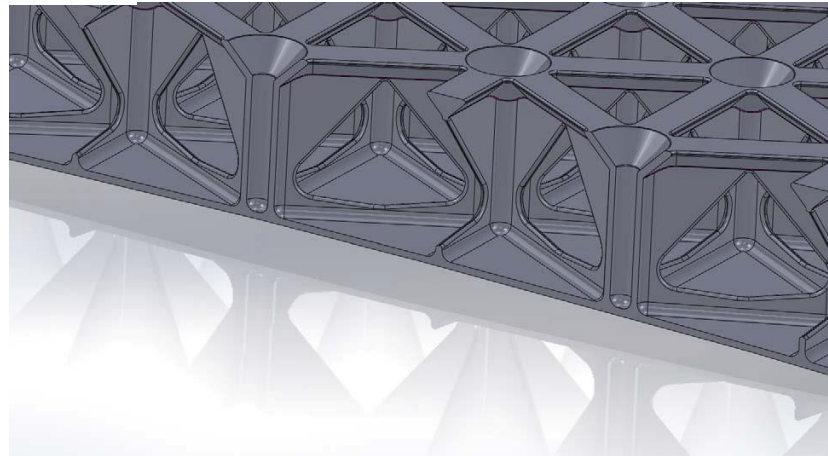
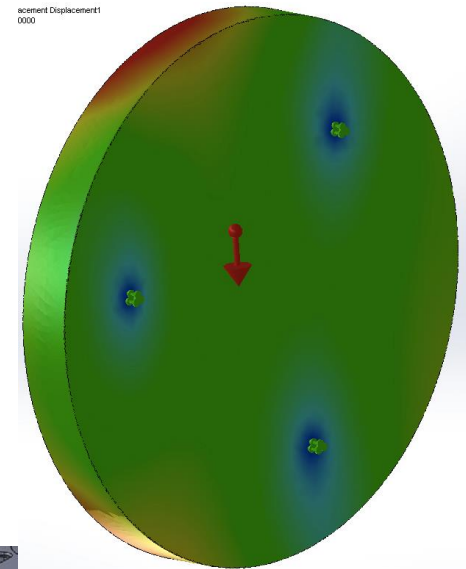
Wall thickness: 0.51mm
Diameter 0.24 meter
Thickness: 25.4 mm
Spherical Mirror - 2.3 meter radius
Weight: 0.28 kg
Areal density: 6 kg/sq meter



Light weight Additive Manufactured Tailored Stiffness Mirror Design Pat. Pending

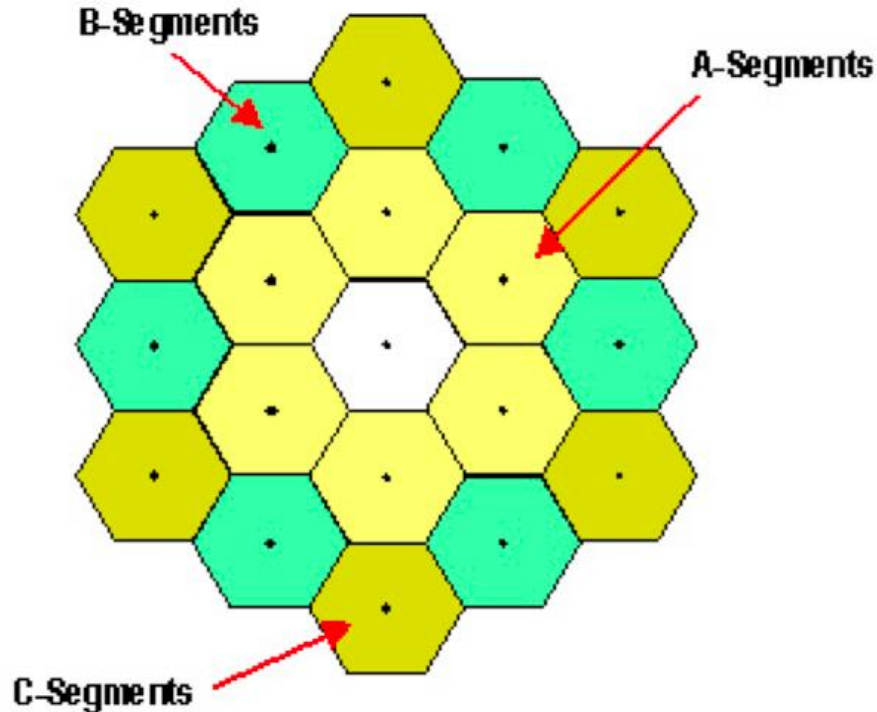


Internal bracing allows tailored stiffness to make the rear Mounting surface of the mirror Substrate stiffer than the front optical contoured surface.



Additive Manufactured Off-Axis Contoured Mirrors Can Be Diamond Turned to Produce Segmented Mirrors of Large Size.

The largest currently available DMLS additive manufacturing machines are practically limited to about 0.4 meter diameter. Future machines are planned for up to 1 meter capacity. Deformable mirror segments are possible.



SUMMARY

Additive manufacturing can quickly produce mirrors of arbitrary periphery and aspheric contour.

Diamond turning of NiP plated mirror substrates with matched thermal expansion is a very low cost, very flexible manufacturing process for mirrors and mirror system metering structures.

Low (10-30 kg/sq. meter) areal density, very stiff metal mirror.

Matching mirror thermal expansion to NiP means low thermal distortion.

Electroplating of NiP to produce a hard, low stress, corrosion resistant deposit to any desired thickness is well developed.