



# John C. Stennis Space Center



# 50 YEARS

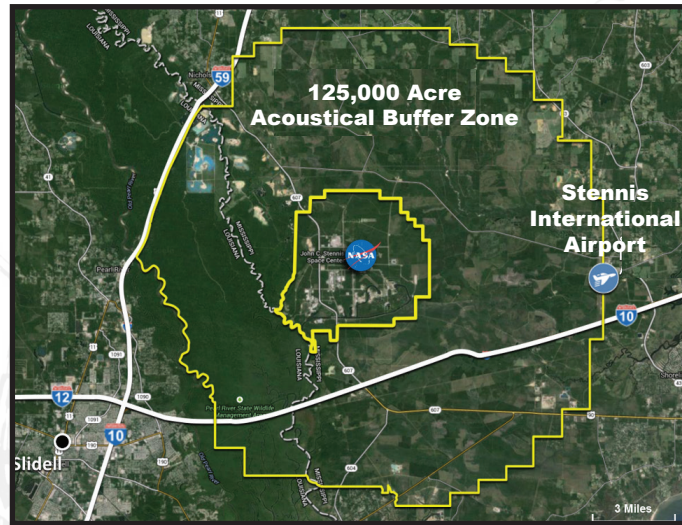
Serving as NASA's Primary Rocket Propulsion Test Center providing world-class testing services

SURROUNDED BY A

# 125,000

acre Acoustical Buffer Zone

Enabling maximum flexibility for operations at Stennis, free from restrictions and encroachment from surrounding communities.



HOME TO

# 40+

Federal, State, Academic & Commercial tenants and a growing workforce of over 5,000 people.

## TRANSPORTATION

- Interstate access to I-10 (E-W) and I-59 (N-S)
- Stennis International Airport located at the boundary of the buffer zone
- A 7 1/2-mile canal system connects to the Gulf of Mexico and connected waterways allowing barge transportation
- Two major commercial airports within 50-mile radius – New Orleans and Gulfport
- Five major ports located within 100-mile radius
- Two major rail lines located within 20-mile radius

Don Beckmeyer, Strategic Business Development  
don.h.beckmeyer@nasa.gov / 228.688.3788  
www.nasa.gov/stennis

Visit NASASTennis on:



# BUSINESS DEVELOPMENT

# WHAT WE HAVE TO OFFER

## Test Complex:

- Underutilized capability including existing test stands and partially completed test sites
- In-house expertise in propulsion testing
- On-site service contracts for facilities, technical services and test commodities
- Regional skilled workforce

## Greenfield Development:

- 10-200+ acre plots available for new construction
- Variety of location options, both centrally and remotely located

## Stennis is located within a regional high-tech corridor, including:

- Airbus
- Northrup Grumman
- Rolls-Royce
- Aerojet Rocketdyne
- Lockheed Martin
- Chevron
- Shell
- Boeing
- Textron
- GE Aviation

## Demographics:

Radius	Population	Labor Force
30 miles	360,999	170,799
60 miles	1,806,015	883,605
90 miles	3,152,847	1,530,865

# DOING BUSINESS WITH STENNIS

## Flexible Business Models:

- Traditional Government
  - NASA provides full suite of services
- Commercial
  - Tailored range of services to match partner needs
- Real Estate
  - Greenfield development of purpose-built facilities (including test facilities) owned and operated by partner

## Flexible Partnership Options:

- Space Act Agreement (SAA)
- Enhanced Use Lease (EUL) Agreement
- Commercial Space Launch Agreement (CSLA)
- Short-term/long-term options available



Stennis is located on the busy I-10 corridor in south Mississippi, 45 miles from New Orleans, LA, and 40 miles from Gulfport, MS