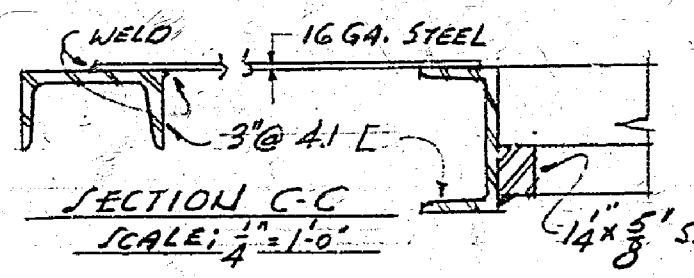
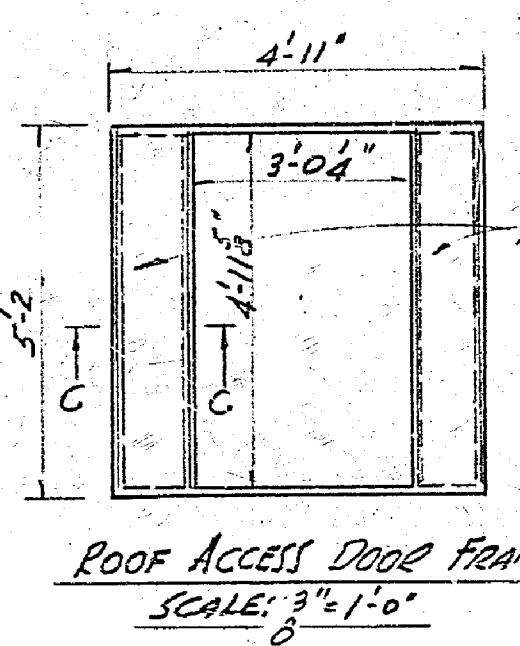
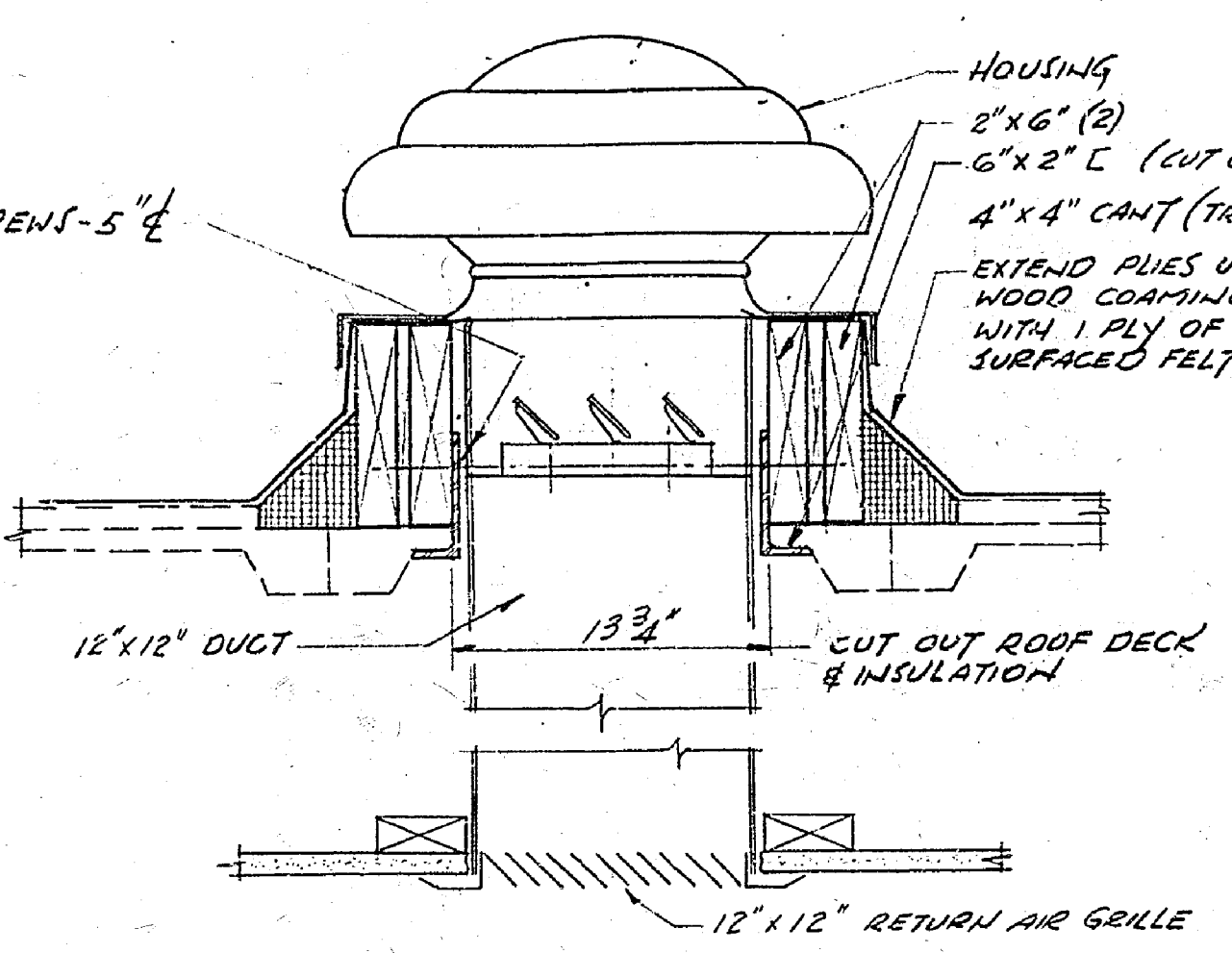


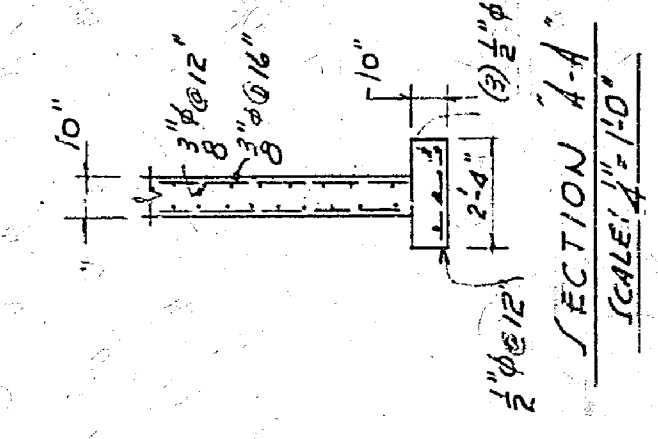
READ (NORTH) ELEVATION
SCALE: 1/8" = 1'-0"



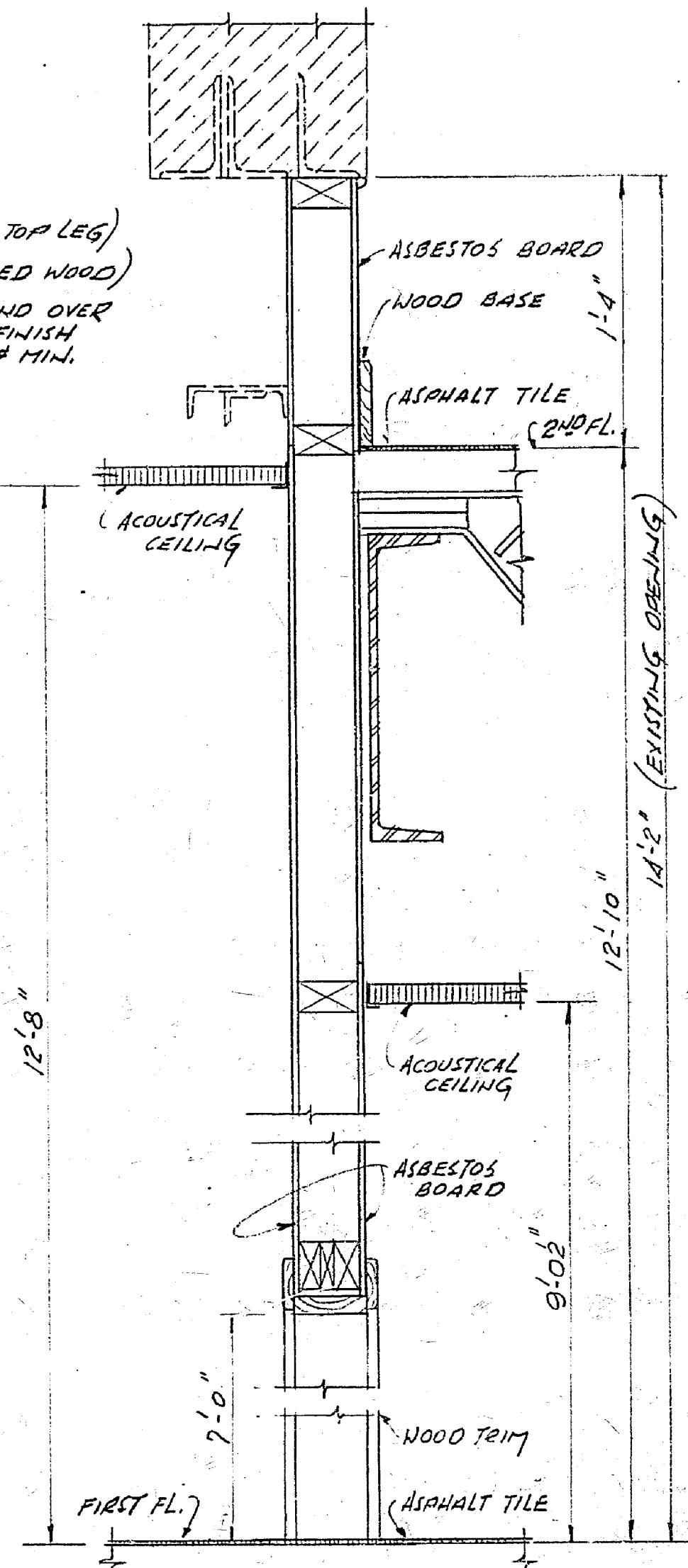
NOTE!
REMOVE EXISTING WINDOWS, SILLS & BRICK SPANDRELS DOWN TO EXISTING FOUNDATION WALLS ON NORTH & EAST WALLS. BRICK UP OPENINGS WITH NEW BRICK TO MATCH EXISTING. NEW BRICK SHALL BE BOND ED INTO EXISTING MASONRY EVERY 5TH COURSE. FURNISH & INSTALL NEW WINDOWS, DOORS, GRILLES AS SHOWN. FOR SIZES OF LOWERS SEE LD-251254
ALL GRILLES SHALL BE BRICK-SIDE VENTS BY CONSTRUCTION SPECIALTIES INC. OR EQUAL OPENINGS SHALL HAVE (2) L'S 4" X 3" X 1/2" UNLESS OTHERWISE NOTED.



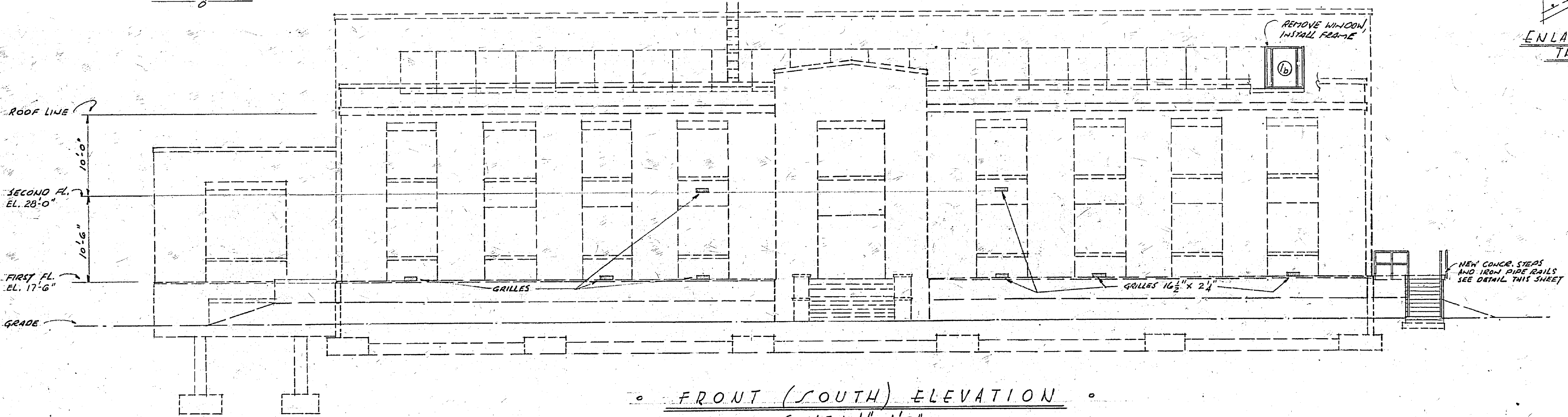
DETAIL OF ROOF VENTILATOR AND CEILING GRILLE
NO SCALE



ENLARGED SECTION THRU STEPS



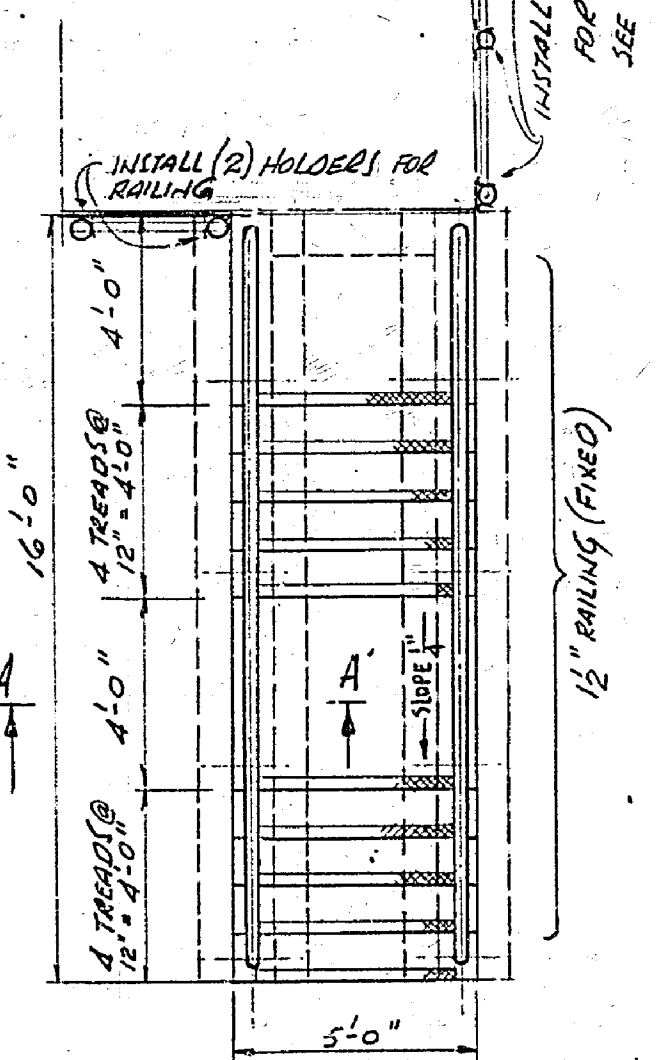
SECTION "4-4"
SCALE: 1/2" = 1'-0"



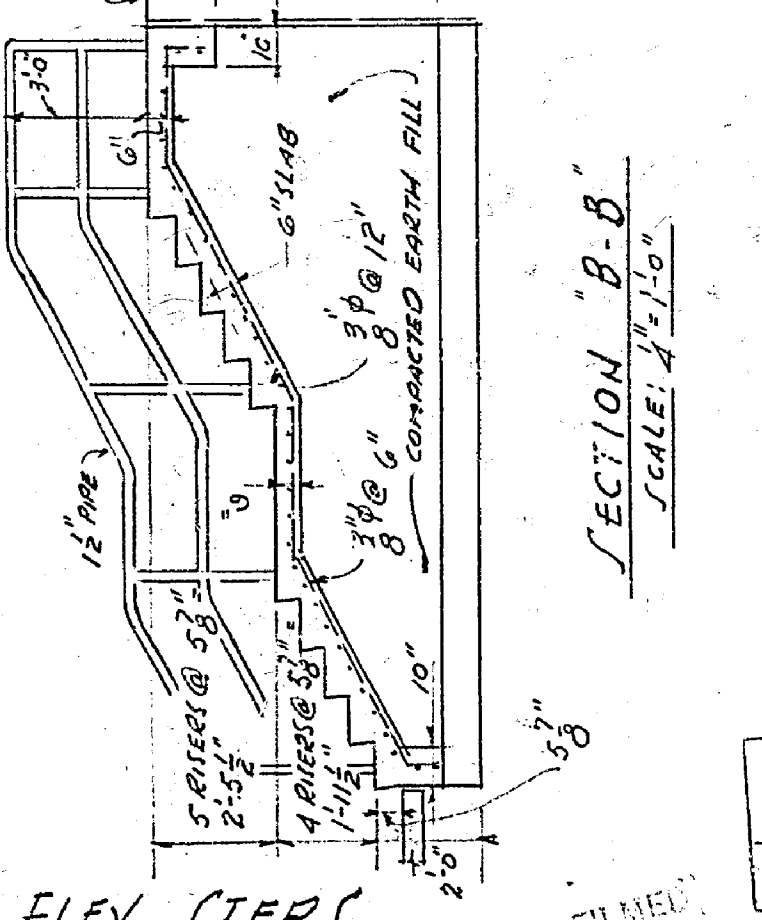
FRONT (SOUTH) ELEVATION
SCALE: 1/8" = 1'-0"

NOTE!
1. ALL EXISTING INSECT SCREENING, FRAMES, LATCHES, ETC. SHALL BE REMOVED
2. ALL EXISTING WINDOWS (EXCEPTING THOSE REMOVED) SHALL HAVE ALL OPERATING MECHANISMS REMOVED AND THE VENTILATORS SHALL BE BOLTED IN CLOSED POSITION.

3. SECURITY GRILLES SHALL BE FINISHED & INSTALLED IN ALL WINDOWS AS NOTED FOR DETAIL OF GRILLE, SEE LD-251242



DETAIL - EAST ELEV. STEPS
SCALE: 1/4" = 1'-0"

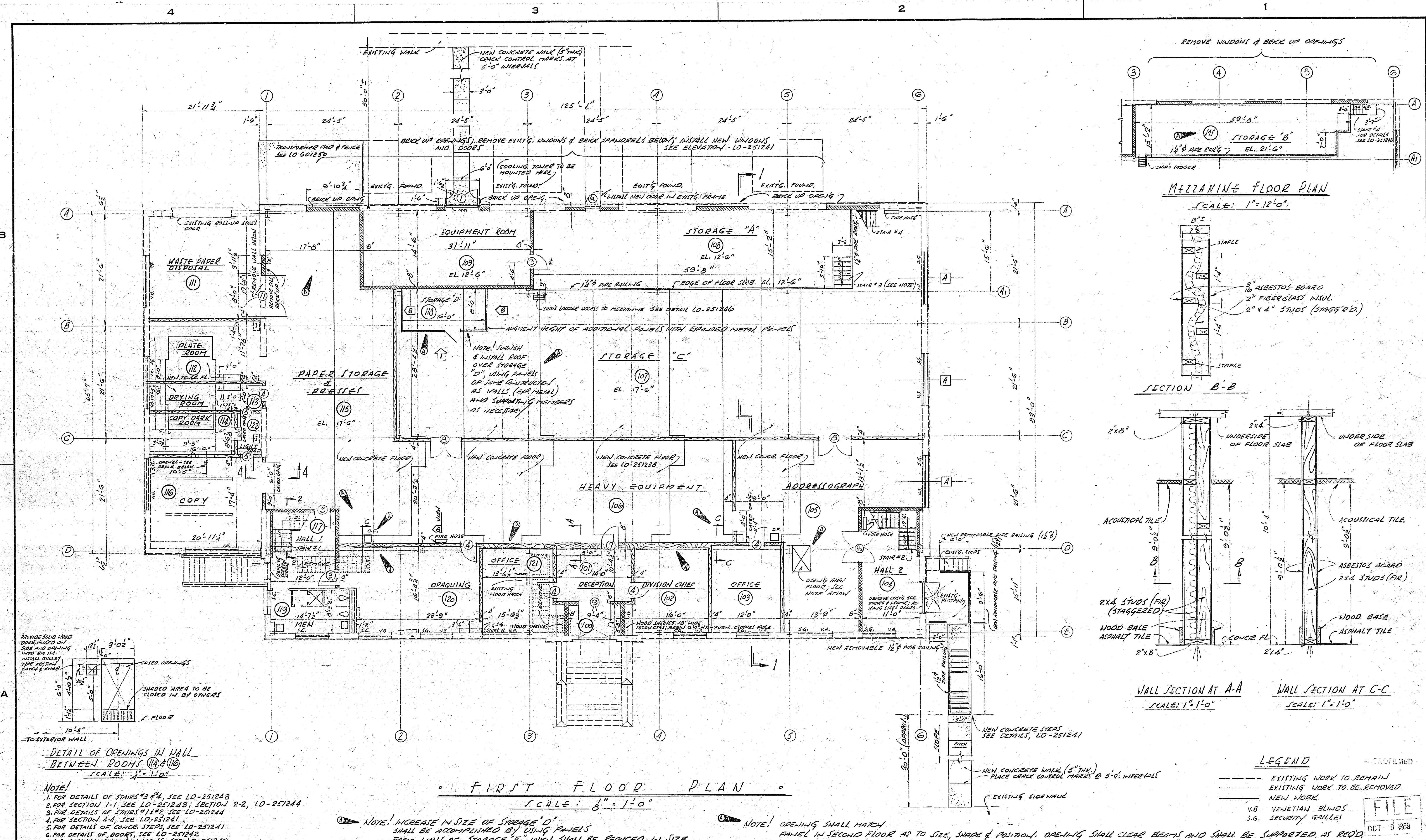


SECTION "B-B"
SCALE: 1/4" = 1'-0"

FILE

DATE	LET.	REVISIONS	CK.	AP.	DATE	LET.	REVISIONS	CK.	AP.
3/3/68	A	ADD EXHAUST FAN (NEW)	WHS/WCH						

NATIONAL AERONAUTICS AND SPACE ADMINISTRATION LANGLEY RESEARCH CENTER LANGLEY FIELD, VA.		CONVERSION OF POWER PLANT ELEVATION	
GRAPHIC SCALE	SCALE AS NOTED	DES. DR. HEWLEY 9-18-59	ENG. AP. PCN 9-30-59
		CK. H. K.	AP. 9-30-59
			LD-251241



FIRST FLOOR PLAN
SCALE: 3/8" = 1'-0"

MEZZANINE FLOOR PLAN
SCALE: 1" = 12'-0"

SECTION B-B

WALL SECTION AT A-A
SCALE: 1" = 1'-0"

WALL SECTION AT C-C
SCALE: 1" = 1'-0"

LEGEND

- EXISTING WORK TO REMAIN
- EXISTING WORK TO BE REMOVED
- NEW WORK
- V.B. VENETIAN BLINDS
- S.G. SECURITY GAULLES

FILE
OCT 9 1958

NOTE!
1. FOR DETAILS OF STAIRS #3 & 4, SEE LO-251243
2. FOR SECTION 1-1, SEE LO-251243; SECTION 2-2, LO-251244
3. FOR DETAILS OF STAIRS #1 & 2, SEE LO-251244
4. FOR SECTION 4-4, SEE LO-251241
5. FOR DETAILS OF CONC. STEPS, SEE LO-251241
6. FOR DETAILS OF DOORS, SEE LO-251242
7. FOR DETAILS OF NEW WINDOWS, SEE LO-251242

NOTE! INCREASE IN SIZE OF STORAGE "D" SHALL BE ACCOMPLISHED BY USING PANELS FROM WALLS OF STORAGE "E" WHICH SHALL BE REDUCED IN SIZE.

NOTE! OPENING SHALL MATCH PANEL IN SECOND FLOOR AS TO SIZE, SHAPE & POSITION. OPENING SHALL CLEAR BEAMS AND SHALL BE SUPPORTED, AS REQD.

DATE	LET.	REVISIONS	CK.	AP.	DATE	LET.	REVISIONS	CK.	AP.
9/23/58	A	CHANGED DESIGNATION; ALSO THICKNESS OF WALL; CHANGE PARTS 1 & 2							

NATIONAL AERONAUTICS AND SPACE ADMINISTRATION
LANGLEY RESEARCH CENTER
LANGLEY FIELD, VA.

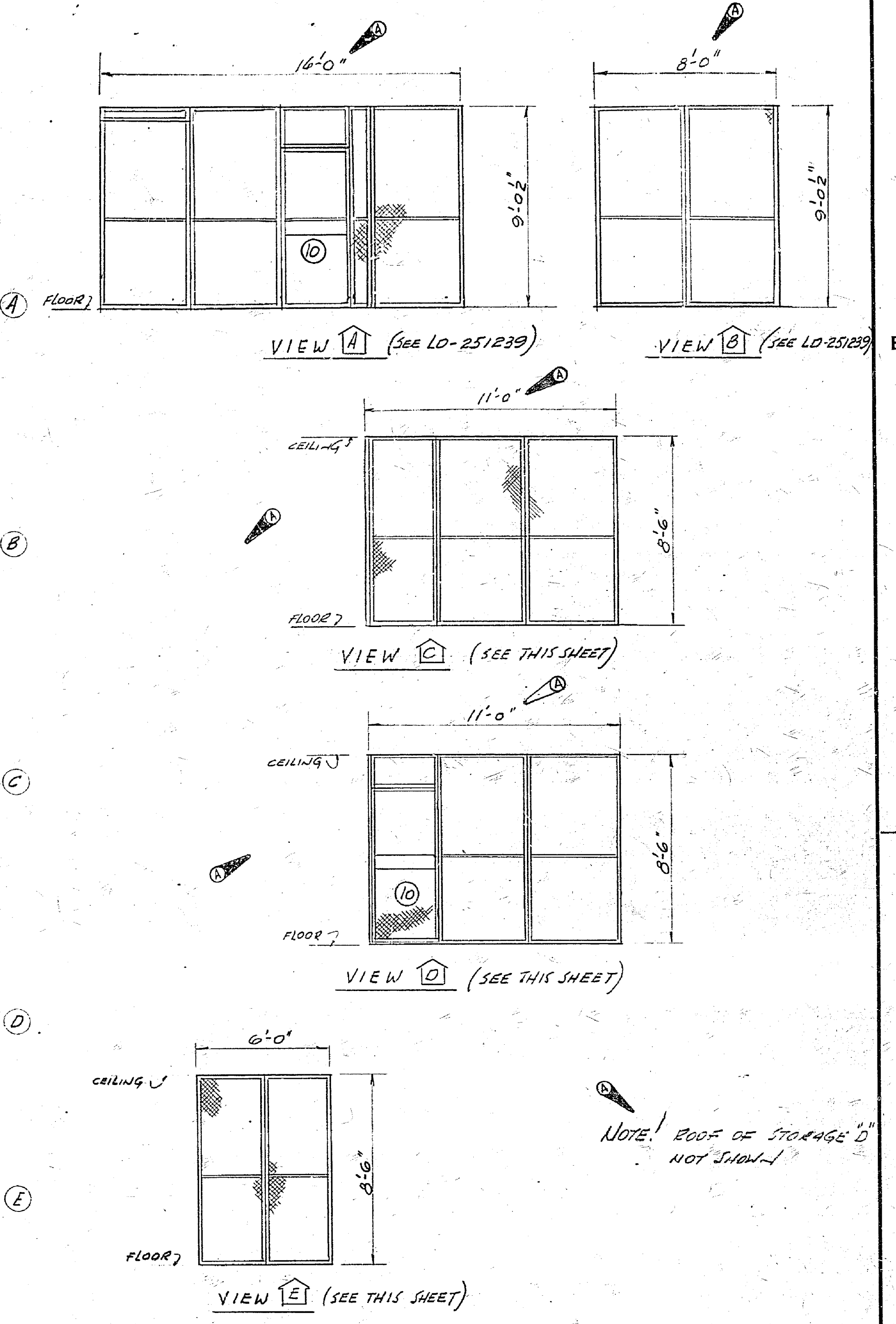
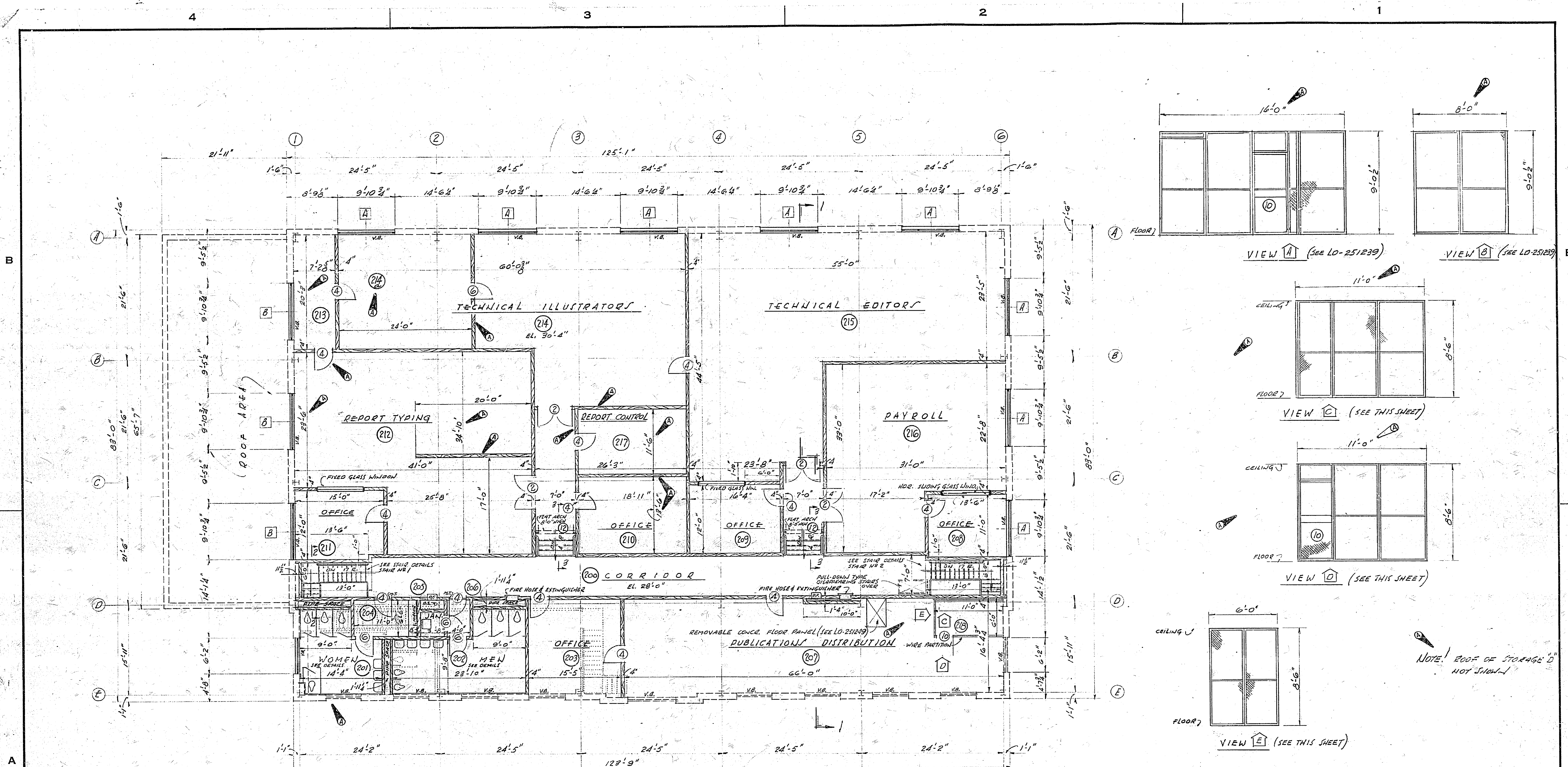
CONVERSION OF POWER PLANT
FIRST FLOOR PLAN

GRAPHIC SCALE: AS NOTED

DES. DR. HEWLEY 9-18-58
CK. H.K. 9-30-58

ENG. AP. FCN 9-30-58

LD-251239



- NOTES!**
1. FOR DETAILS OF TOILET ROOMS, SEE LD-251245
 2. FOR DETAILS OF NEW WINDOWS, SEE LD-251242
 3. FOR DETAILS OF STAIRS, NOS. 1 & 2, SEE LD-251244
 4. FOR DETAILS OF FIREHOSE-EXTINGUISHER INSTALLATION, SEE LD-251245
 5. FOR DETAILS OF 3'-4" X 5'-0" REMOVABLE CONCRETE (SLAB 'F') FLOOR PANEL (ROOM 207), SEE LD-251249 (LOCATE TO SUIT OPENING TO BE CUT, 1ST FL.)
 6. FOR SECTION 1-1, SEE LD-251243; SECTION 2-2, SECTION 3-3, LD-251244
 7. PROVIDE OPENING THRU FLOOR AT EACH PIPE SPACE SUITABLE TO PASS ALL NECESSARY PIPING.
 8. FOR DETAILS OF FIXED & HORIZONTAL SLIDING WINDOWS IN OFFICE PARTITIONS, SEE LD-251246

SECOND FLOOR PLAN
SCALE: 1/8" = 1'-0"

° WIDE PARTITIONS °
SCALE: 1/4" = 1'-0"

- LEGEND**
- EXISTING WORK TO REMAIN
 - EXISTING WORK TO BE REMOVED
 - NEW WORK

DATE	LET.	REVISIONS	CK.	AP.	DATE	LET.	REVISIONS	CK.	AP.
3/3/68	A	NEW PARTS; PART. RELOC.; NEW DOOR ADD W.C. RT. 201; CHANGE PARTS W.S.							

NATIONAL AERONAUTICS AND SPACE ADMINISTRATION LANGLEY RESEARCH CENTER LANGLEY FIELD, VA.		CONVERSION OF POWER PLANT SECOND FLOOR PLAN	
GRAPHIC SCALE	SCALE AS NOTED	DES. DR. HENRY-9-18-59	ENG. AP. ALN, 9-30-59
		CK. H.K. 9-30-59	AP.
			LD-251240